

**SUBDIVISION PLAN OF
LOT 11 SECTIONS 27 AND 28
LAKE DISTRICT PLAN VIP99999**

BCGS 92B.044



The intended plot size of this plan is 560mm in width by 432mm in height (C size) when plotted at a scale of 1:250.

Grid bearings are derived from differential dual frequency GNSS observations and are referred to the central meridian of UTM Zone 10 (123° West Longitude).

The UTM coordinates and estimated absolute accuracy achieved are derived from dual frequency GNSS observations to BC Active Control station ABC.

This plan shows horizontal ground level distances unless otherwise specified. To compute grid distances, multiply ground level distances by the average combined factor of [insert factor]. The average combined factor has been determined based on an ellipsoidal elevation of [insert ellipsoidal elevation] metres.

Legend:

- | | | |
|----------------|--------|---------------------------------|
| Found | Placed | |
| ● | ○ | Denotes Standard Iron Post |
| | △ | Denotes GNSS traverse point set |
| NF | | Denotes nothing found |
| m ² | | Denotes square metres |
| Wt | | Denotes Witness |

Note:

This plan shows one or more witness posts which are not set on the true corner(s).

Hub 1 GNSS Control
Datum: NAD83(CSRs) 3.0.0.BC.1.NVI
UTM zone 10 coordinates
UTM northing:
UTM easting:
Absolute accuracy:

Hub 2 GNSS Control
Datum: NAD83(CSRs) 3.0.0.BC.1.NVI
UTM zone 10 coordinates
UTM northing:
UTM easting:
Absolute accuracy:

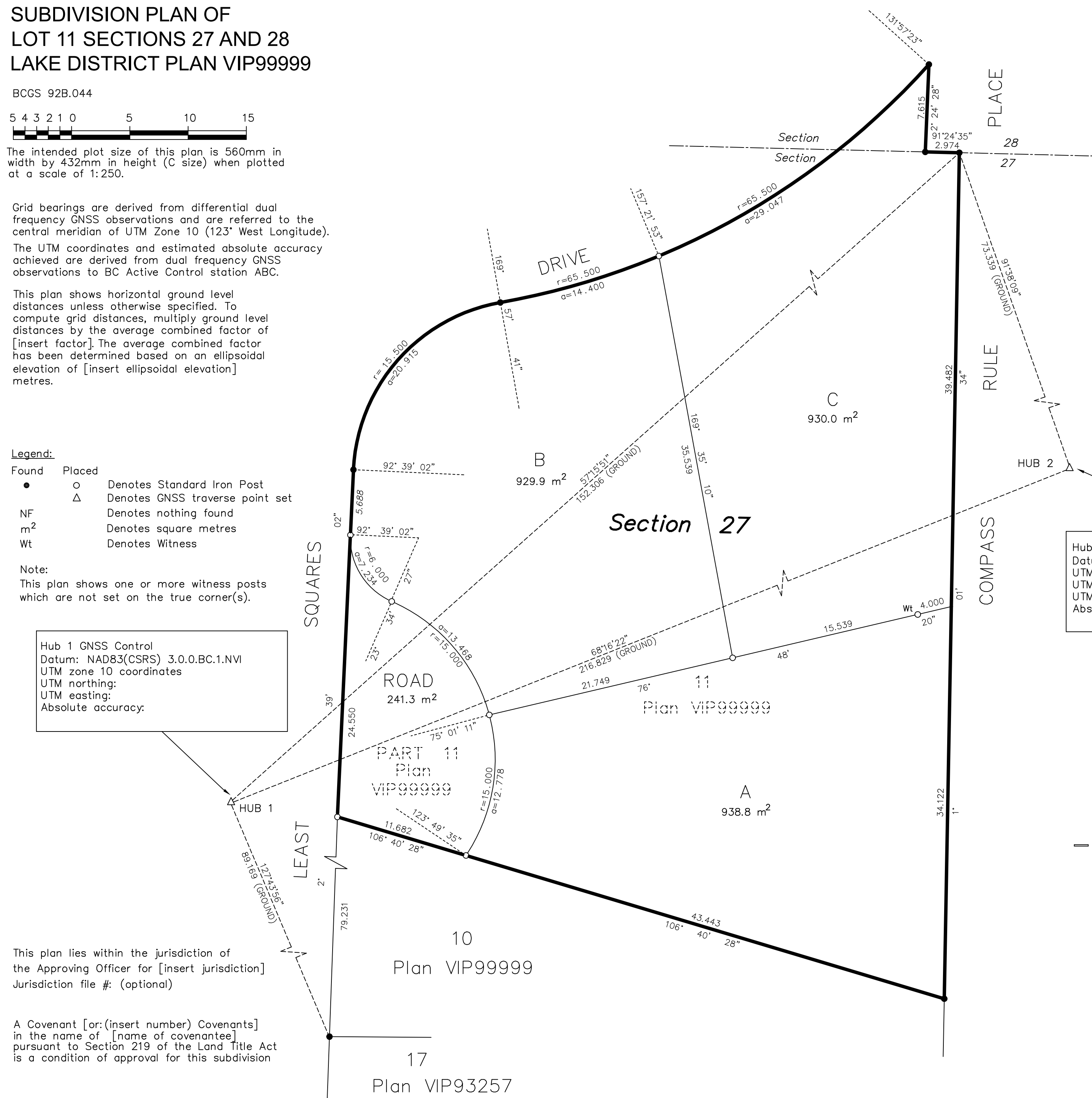
This plan lies within the jurisdiction of the Approving Officer for [insert jurisdiction]
Jurisdiction file #: (optional)

A Covenant [or: (insert number) Covenants] in the name of [name of covenantee] pursuant to Section 219 of the Land Title Act is a condition of approval for this subdivision

Name of Survey Company
Address
Telephone number
File: E Subdivision plan S. 67 LTA

This plan lies within the _____ Regional District.

The field survey represented by this plan was completed on the [dd] day of [month], [yyyy] [name of BCLS], BCLS [commission number]



70 cm² required for Registrar

