

**STATUTORY RIGHT OF WAY PLAN  
OVER A PORTION OF LOT C, SECTION 24,  
TOWNSHIP 1, NEW WESTMINSTER DISTRICT,  
PLAN 20698**

BCGS 926.008  
PURSUANT TO SECTION 113 OF THE LAND TITLE ACT



THE INTENDED PLOT SIZE OF THIS PLAN IS 864mm IN WIDTH BY 560mm IN HEIGHT (D SIZE) WHEN PLOTTED AT A SCALE OF 1:400

THIS PLAN LIES WITHIN INTEGRATED SURVEY AREA  
No. ... (name) NAD83 (CSRS) 4.0.0.BC.1.MVRD

GRID BEARINGS ARE DERIVED FROM DIFFERENTIAL DUAL FREQUENCY  
GNSS OBSERVATIONS AND ARE REFERRED TO THE CENTRAL  
MERIDIAN OF UTM ZONE (Insert number)

THE UTM COORDINATES AND ESTIMATED ABSOLUTE  
ACCURACY ACHIEVED ARE DERIVED FROM DUAL FREQUENCY  
GNSS OBSERVATIONS TO GEODETIC CONTROL MONUMENTS  
8625, 5744 AND BC ACTIVE CONTROL STATION "BCSF".

THIS PLAN SHOWS HORIZONTAL GROUND-LEVEL DISTANCES,  
UNLESS OTHERWISE SPECIFIED, TO COMPUTE GRID DISTANCES,  
MULTIPLY GROUND-LEVEL DISTANCES BY THE AVERAGE COMBINED  
FACTOR OF (Insert factor). THE AVERAGE COMBINED  
FACTOR HAS BEEN DETERMINED BASED ON AN ELLIPSOIDAL  
ELEVATION OF (Insert ellipsoidal elevation) METRES.

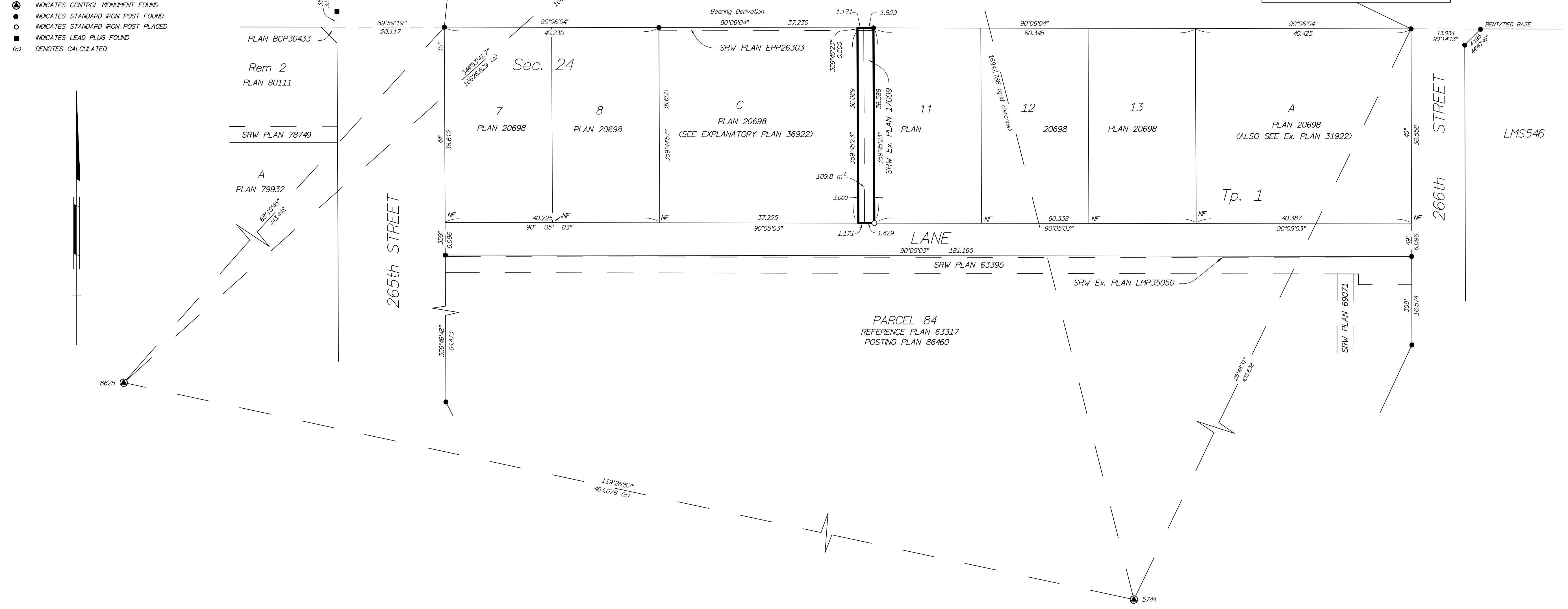
**LEGEND:**

- INDICATES CONTROL MONUMENT FOUND
- INDICATES STANDARD IRON POST FOUND
- INDICATES STANDARD IRON POST PLACED
- INDICATES LEAD PLUG FOUND
- (c) DENOTES CALCULATED

Iron Post  
DATUM NAD83 (CSRS) 4.0.0.BC.1.MVRD  
UTM ZONE \_\_\_\_\_  
UTM NORTHING \_\_\_\_\_  
UTM EASTING \_\_\_\_\_  
ESTIMATED ABSOLUTE ACCURACY \_\_\_\_\_

Iron Post  
DATUM NAD83 (CSRS) 4.0.0.BC.1.MVRD  
UTM ZONE \_\_\_\_\_  
UTM NORTHING \_\_\_\_\_  
UTM EASTING \_\_\_\_\_  
ESTIMATED ABSOLUTE ACCURACY \_\_\_\_\_

70 cm<sup>2</sup>  
required for Registrar



THIS PLAN LIES WITHIN THE  
DISTRICT.

THE FIELD SURVEY REPRESENTED BY THIS PLAN WAS  
COMPLETED ON THE [dd] DAY OF [month],[yyyy]  
[name of BCLSI, BCLSI [commission number]]