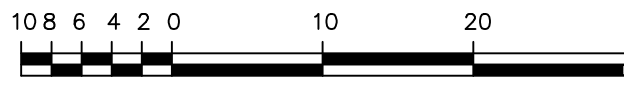


REFERENCE PLAN OF PART OF LOT 20 SECTION 23 LAKE DISTRICT PLAN 5678

Plan EPP12345

Pursuant to Section 99(1)(e) of the Land Title Act.
For Covenant Purposes

BCGS 92B.044



The intended plot size of this plan is 432mm in width by 560mm in height (C size) when plotted at a scale of 1:500

UTM zone 10 coordinates
Datum: NAD83(CSRs) 4.0.0.BC.1
UTM Northing:
UTM Easting:
Absolute accuracy: 0.02

70 cm² required for Registrar

This plan lies within Integrated Survey Area No. ____,
(name) NAD83 (CSRS) 4.0.0.BC.1

Grid bearings are derived from observations between
geodetic control monuments 07H1234 and 07H2345,
and are referred to the central meridian of UTM Zone ____

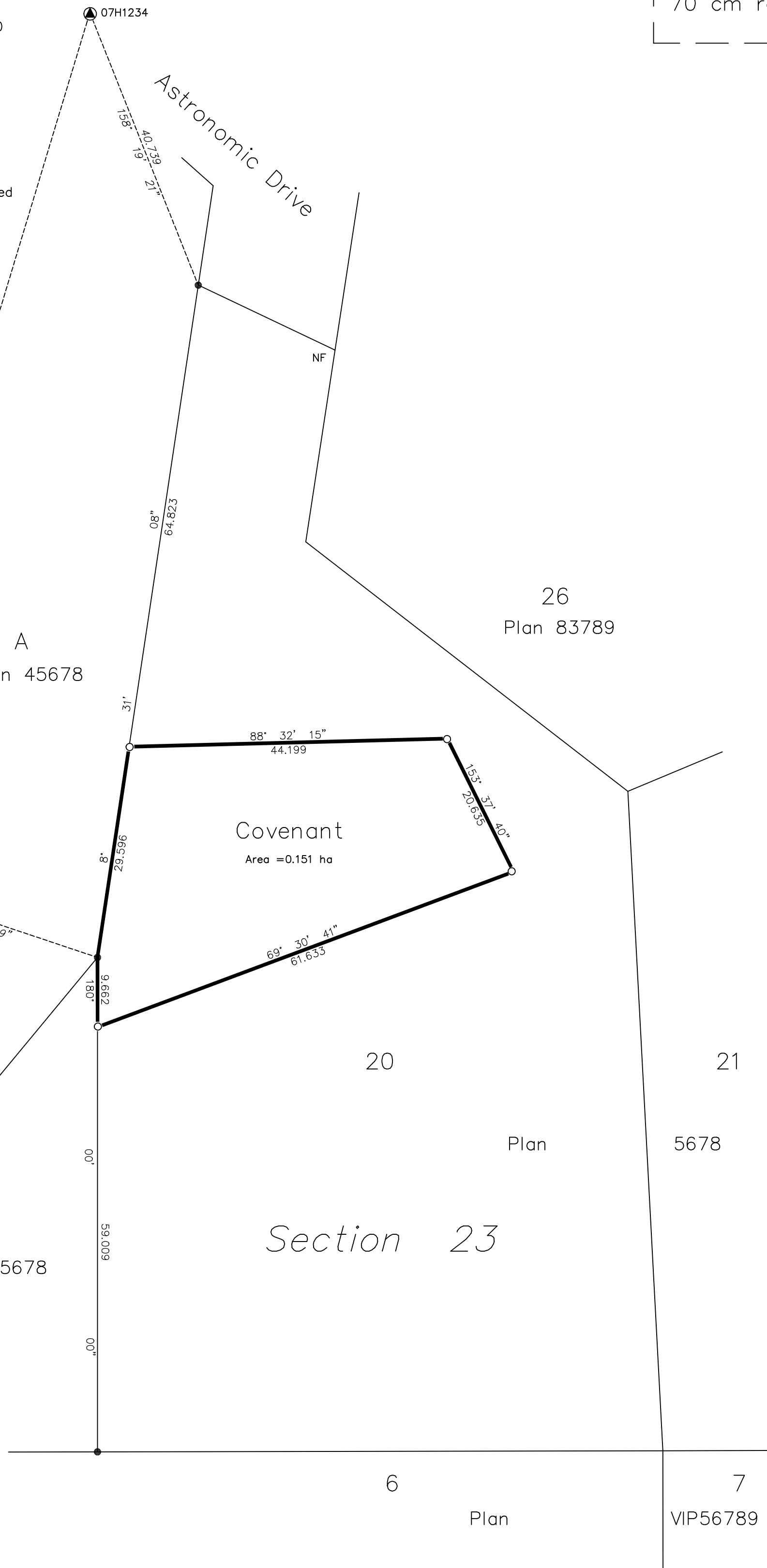
The UTM coordinates and estimated absolute accuracy achieved
are derived from the MASCOT published coordinates
and standard deviations for geodetic control
monuments 07H1234 and 07H2345.

This plan shows horizontal ground level distances unless
otherwise specified. To compute grid distances, multiply
ground level distances by the average combined factor of
[insert factor]. The average combined factor has been
determined from control monuments 07H1234 and 07H2345.

Legend:

- | | | |
|-------|--------|----------------------------|
| Found | Placed | |
| ● | ○ | Denotes Control Monument |
| ● | ○ | Denotes Standard Iron Post |
| ha | | Denotes hectares |
| NF | | Denotes nothing found |

UTM zone 10 coordinates
Datum: NAD83(CSRs) 4.0.0.BC.1
UTM Northing:
UTM Easting:
Absolute accuracy: 0.02



This plan lies within
the _____ Regional District.

The field survey represented by
this plan was completed on
the [dd] day of [month], [yyyy]
[name of BCLS], BCLS [commission number]